

TM 11-6625-645-24P

TECHNICAL MANUAL

ORGANIZATIONAL, DIRECT SUPPORT, AND GENERAL SUPPORT MAINTENANCE

REPAIR PARTS AND SPECIAL TOOLS LISTS

(INCLUDING DEPOT MAINTENANCE REPAIR PARTS AND SPECIAL TOOLS)

FOR

TEST, SET, STABILIZATION SYSTEM, FLIGHT LINE TS-1893/ASM

(NSN 6625-00-868-8359)

TECHNICAL MANUAL }
 No. 11-6625-645-24P }

HEADQUARTERS
 DEPARTMENT OF THE ARMY
 WASHINGTON, DC, 22 November 1976

**ORGANIZATIONAL, DIRECT SUPPORT, AND GENERAL SUPPORT MAINTENANCE
 REPAIR PARTS AND SPECIAL TOOLS LISTS
 (INCLUDING DEPOT MAINTENANCE REPAIR PARTS AND SPECIAL TOOLS)
 FOR
 TEST SET, STABILIZATION SYSTEM, FLIGHT LINE TS-1893/ASM
 (NSN 6625-00-868-8359)**

REPORTING OF ERRORS

You can improve this manual by recommending improvements using DA Form 2028-2 (Test) located in the back of the manual. Simply tear out the self addressed form, fill it out as shown on the sample, fold it where shown, and drop it in the mail.

If there are no blank DA Form 2028-2 (Test) in the back of your manual, use the standard DA Form 2028 (Recommended Changes to Publications and Blank Forms) and forward to the Commander, US Army Electronics Command, ATTN: DRSEL-MA-Q, Fort Monmouth, New Jersey 07703.

In either case a reply will be furnished direct to you.

Table of Contents

	Page	Illus Figure
Section I. Introduction	1	
11. Repair parts list	5	
Group 00 Test Set, Stabilization System Flight Line TS-18C3/ASM	5	1
01 Multimeter ME-48B/U, PART OF AN/PS-4B (See TN 11-6685-816-35P for parts)		
02 Adapter cable assembly P/N 10-359137-1 (No parts authorized)		
03 Adapter cable assembly P/N 10-359137-1 (No parts authorized)		
04 Red Test Lead CX2353/PSM-4A	9	2
05 Black Test Lead CX-2354/PSM-4A	11	3
06 High Voltage Test Lead CX-2355/PSM-4A	13	4
Section III. Special tools list (Not applicable)		
IV. National stock number and part number index	14	

SECTION I
INTRODUCTION

1. Scope.

This manual lists repair parts and special tools required for performance or organizational maintenance of the TS-1893/ASM.

2. General

This Repair Parts and Special Tools List is divided into the following sections:

a. Section II. Repair Parts List. A list of repair parts authorized for use in the performance of maintenance. The list also includes parts which must be removed for replacement of the authorized parts. Parts lists are composed of functional groups in ascending numerical sequence, with the parts in each group listed in figure and item number sequence.

b. Section III. Special Tools List. Not applicable.

c. Section IV. National Stock Number and Part Number Index. A list, in ascending National item identification number (NIIN, last 9 digits) sequence, of all National stock numbers appearing in the listings, followed by a list, in alphameric sequence, of all part numbers appearing in the listings. National stock number and part numbers are cross-referenced to each illustration figure and item number appearance.

3. Explanation of Columns

The following provides an explanation of columns found in the tabular listings:

a. Illustration. This column is divided as follows:

(1) *Figure number.* Indicates the figure number of the illustration in which the item is shown.

(2) *Item number.* The number used to identify each item called out in the illustration.

b. Source, Maintenance, and Recoverability Codes (SMR).

(1) Source code. Source codes are assigned to support items to indicate the manner of acquiring support items for maintenance, repair, or overhaul of end items. Source codes are entered in the first and second positions of the Uniform SMR Code format as follows:

<i>Code</i>	<i>Definition</i>
PA	—Item procured and stocked for anticipated or known usage.

XD	—A support item that is not stocked, When required, item will be procured through normal supply channels.
----	---

NOTE

Cannibalization or salvage may be used as a

source of supply for any items source coded above except those coded XA, XD, and aircraft support items as restricted by AR 700-42.

(2) Maintenance code. Maintenance codes are assigned to indicate the levels of maintenance authorized to USE and REPAIR support items. The maintenance codes are entered in the third and fourth positions of the Uniform SMR Code format as follows:

(a) The maintenance code entered in the third position will indicate the lowest maintenance level authorized to remove, replace, and use the support item. The maintenance code entered in the third position will indicate one of the following levels of maintenance:

<i>Code</i>	<i>Application/Explanation</i>
0	-Support item is removed, replaced, used at the organizational level.
H	-Support item is removed, replaced, used, at the general support level.

(b) The maintenance code entered in the fourth position indicates whether the item is to be repaired and identifies the lowest maintenance level with the capability to perform complete repair (i.e, all authorized maintenance functions). This position will contain one of the following maintenance codes:

<i>Code</i>	<i>Application/Explanation</i>
H	-The lowest maintenance level capable of complete repair of the support item is the general support level.
Z	-Nonreparable. No repair is authorized.

(3) Recoverability code. Recoverability codes are assigned to support items to indicate the disposition action on unserviceable items. The recoverability code is entered in the fifth position of the Uniform SMR Code format as follows:

<i>Recoverability codes</i>	<i>Definition</i>
Z	-Nonreparable item. When unserviceable, condemn and dispose at the level indicated in position 3.
H	-Reparable item. When uneconomically reparable, condemn and dispose at the general support level

c. National Stock Number. Indicates the National stock number assigned to the item and will be used for requisitioning purposes.

d. Part Number. Indicates the primary number used by the manufacturer (individual, company, firm, corporation, or Government activity), which controls

the design and characteristics of the item by means of its engineering drawings, specifications standards, and inspection requirements, to identify an item or range of items.

NOTE

When a stock numbered item is requisitioned, the repair part received may have a different part number than the part being replaced.

e. Federal Supply Code for Manufacturer (FSCM). The FSCM is a 5-digit numeric code listed in SB 708-42 which is used to identify the manufacturer, distributor, or Government agency, etc.

f. Description. Indicates the Federal item name and, if required, a minimum description to identify the item.

g. Unit of Measure (U/M). Indicates the standard of the basic quantity of the listed item as used in performing the actual maintenance function. This measure is expressed by a two-character alphabetical abbreviation (e.g., ea, in, pr, etc.). When the unit of measure differs from the unit of issue, the lowest unit of issue that will satisfy the required units of measure will be requisitioned.

h. Quantity Incorporated in Unit. Indicates the quantity of the item used in the breakout shown on the illustration figure, which is prepared for a functional group, subfunctional group, or an assembly.

4. Special Information

The following publications pertain to the TS-1893/ASM and its components:

TM 11 6625-645-15, Test Sot, Stabilization System, Flight Line TS-1893/ASM

TM 11-6625-816-15, Multimeter AN/PSM-4A and AN/PSM-4B

TM 11-6625-816-25P, Multimeter AN/PSM-4A and AN/PSM-4B

5. How to Locate Repair Parts

a. When National stock number or part number is unknown.

(1) *First.* Using the table of contents, determine the functional group within which the repair part belongs. This is necessary since illustrations are prepared for functional groups and listings are divided into the same groups.

(2) *Second.* Find the illustration covering the functional group to which the repair part belongs.

(3) *Third.* Identify the repair part on the illustration and note the illustration figure and item number of the repair part.

(4) *Fourth.* Using the Repair Parts Listing, find the figure and item number noted on the illustration.

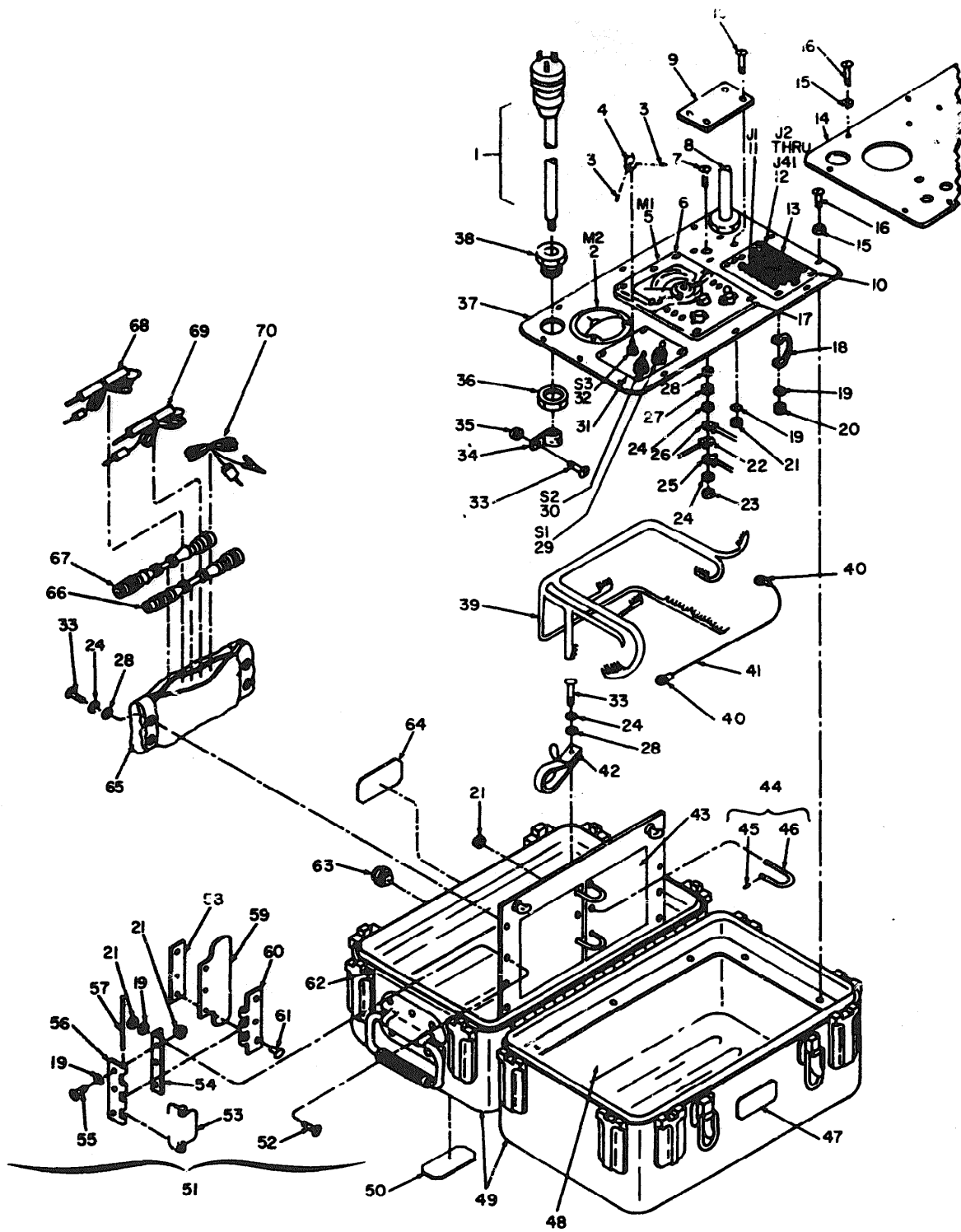
b. When National stock number or part number is known.

(1) *First Using the Index of National Stock Numbers and Part Numbers,* find the pertinent National stock number or part number. This index is in ascending NIIN sequence followed by a list of part numbers in ascending alphameric sequence, cross-referenced to the illustration figure number and item number.

(2) *Second.* After finding the figure and item number, locate the figure and item number in the repair parts list.

6. Abbreviations

Not applicable.



ELOZR001

Figure 1. Test Set, Stabilization System Flight Line TS-1893/ASM.

SECTION II

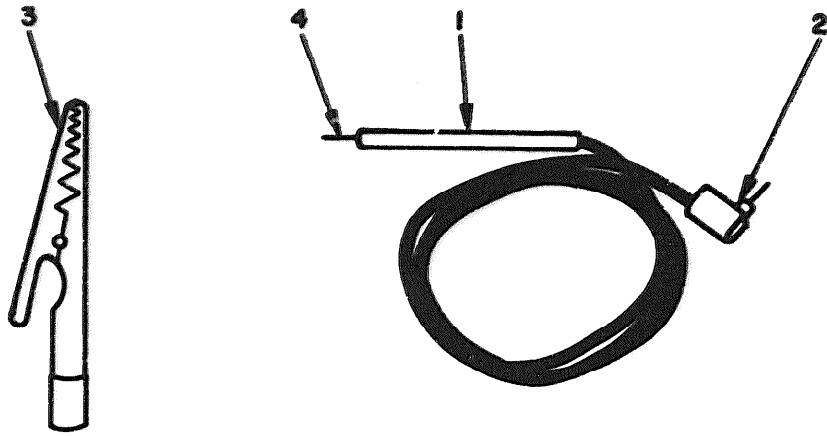
TM 11-6625-645-24P

(1) ILLUSTRATION		(2) SMR CODE	(3) NATIONAL STOCK NUMBER	(4) PART NUMBER	(5) FSCN	(6) DESCRIPTION	(7) U/M	(8) QTY INC IN UNIT
(a) FIG NO.	(b) ITEM NO.					USABLE ON CODE		
						GROUP 00 TEST SET, STABILIZATION SYSTEM FLIGHT LINE TS-1893/ASM		
1	1	PAHZZ	6625-00-908-7403	A02V5309-4	77272	CABLE ASSEMBLY	EA	1
1	2	PAHZZ	6625-00-908-7404	A02V5302-10	77272	METER	EA	1
1	3	XDHZZ		AN565AC4M3	88044	SETSCREW	EA	2
1	4	PAHZZ	5355-00-616-9604	MS91528-1P2B	96906	KNOB	EA	1
1	5	PAORH	6625-00-585-9795	ANP5M4B	80058	MULTIMETER	EA	1
1	6	XDMZZ		AN500-8-14	88044	SCREW	EA	7
1	7	XDMZZ		AN507-832R6	88044	SCREW	EA	2
1	8	XDMZZ	6625-00-908-7405	A02V5309-5	77272	CABLE ASSEMBLY	EA	1
1	9	XDMZZ		114V3008-1	77272	PLATE, IDENTIFICATION	EA	1
1	10	XDMZZ		AN515C4R8	88044	SCREW	EA	6
1	11	PAHZZ	5935-00-577-2336	MS16108-3A	96906	TEST JACK, BLACK	EA	1
1	12	PAHZZ	5935-00-578-3489	MS16108-2A	96906	TEST JACK, RED	EA	40
1	13	XDHZZ		A02V3121-22	77272	PLATE, INSTRUCTION	EA	1
1	14	XDHZZ		A02V3030-1	77272	PANEL ASSEMBLY, FRONT	EA	1
1	15	XDMZZ	5310-00-167-0812	AN960C10L	88044	WASHER	EA	12
1	16	XDMZZ		AN520C10R12	88044	SCREW	EA	12
1	17	XDMZZ	5305-00-984-6193	AN500-8-8	88044	SCREW	EA	2
1	18	XDMZZ	5975-00-825-3330	TY13	59730	TY-RAP	EA	4
1	19	XDMZZ	5310-00-595-6425	AN960C4L	88044	WASHER	EA	14
1	20	XDMZZ		MS20365-440	96906	NUT	EA	4
1	21	XDMZZ		MS20365D440	96906	NUT	EA	15
1	22	XDMZZ	5940-00-557-1627	31899	09769	TERMINAL, LUG	EA	1
1	23	XDMZZ	5310-00-941-6019	MS20364-832	96906	NUT	EA	2
1	24	XDMZZ	5310-00-558-6207	AN960C8L	88044	WASHER	EA	9
1	25	XDMZZ	5940-00-250-7751	32596	09769	TERMINAL, LUG	EA	1
1	26	XDMZZ		31883	09769	TERMINAL, LUG	EA	1
1	27	XDMZZ		AN340C8	88044	NUT	EA	2
1	28	XDMZZ		MS25338-80	96906	WASHER, LOCK	EA	7
1	29	PAHZZ	5930-00-660-3953	MS24525-22	96906	SWITCH, FOUR POLE	EA	1
1	30	PAHZZ	5930-00-660-3950	MS24524-30	96906	SWITCH, DOUBLE POLE	EA	1
1	31	XDMZZ		A02V3041-8	77272	PLATE, INSTRUCTION	EA	1
1	32	PAHZZ	5930-00-226-0633	A02V53074-3	77272	SWITCH, ROTARY	EA	1
1	33	XDMZZ		AN515C8R6	88044	SCREW	EA	6
1	34	XDMZZ	5340-00-565-0004	MS21919DG10	96906	CLAMP	EA	1
1	35	XDMZZ		MS20365D832	96906	NUT	EA	1
1	36	PAHZZ	5975-00-642-7261	14251ZE3-4	59730	LOCKNUT, NIPPLE	EA	1
1	37	XDMZZ		114E5986-4	77272	PANEL ASSEMBLY, FRONT	EA	1
1	38	XDHZZ		194351ZE3-4	59730	NIPPLE	EA	1
1	39	XDMZZ		114E5986-2	77272	HARNES ASSEMBLY, WIRE	EA	1

SECTION II

TM 11-6625-645-24P

02 ILLUSTRATION		03	04	05	06	07	08
02 FIG. NO.	03 ITEM NO.	03 SHE CODE	04 NATIONAL STOCK NUMBER	05 PART NUMBER	06 FIGURE	07 DESCRIPTION	08 QTY DESC UNIT
						USABLE ON CODE	UNIT
1	40	XDRZZ		320970	09769	TERMINAL, LUG	EA 2
1	41	XDRZZ		M1185086	81349	WIRE, JUMPER	EA 1
1	42	XDRZZ		A7990-1-121-24A	78553	CLAMP, HARNESS	EA 2
1	43	PAQZZ	7610-00-145-0179	SEE500-2	77272	OPERATING INSTRUCTIONS	EA 1
1	44	XDRZZ		AO2V3044-19	77272	CLIP ASSEMBLY	EA 1
1	45	XDRZZ		AO2V3044-10	77272	PIN	EA 1
1	46	XDRZZ		AO2V3044-18	77272	CLIP	EA 1
1	47	XDRZZ		120HA113	94637	PLATE, WARNING	EA 1
1	48	XDRZZ		120B24SULB	94637	SHELL ASSEMBLY	EA 1
1	49	XDRHH		AO2VS305-2	77272	CASE ASSEMBLY OR	EA 1
1	49	XDRHH		AO2VS305-1	77272	CASE ASSEMBLY	EA 1
1	50	XDRZZ		120HA113-3	94637	PLATE, IDENTIFICATION	EA 1
1	51	XDRHH		AO2V3106-1	77272	RETAINER ASSEMBLY	EA 1
1	52	XDRZZ		AM505C4R6	88044	SCREW	EA 3
1	53	PAQZZ	6625-00-908-7408	AO2V3106-6	77272	SPRING, RETAINER	EA 1
1	54	XDRZZ		AO2V3106-3	77272	ANGLE, HINGE	EA 1
1	55	XDRZZ		AM515C4R6	88044	SCREW	EA 3
1	56	XDRZZ		AO2V3106-4	77272	HINGE, HALF	EA 1
1	57	XDRZZ		MS20253-2-350	96906	PIN	EA 1
1	58	XDRZZ		AO2V3044-15	77272	PLATE	EA 1
1	59	XDRZZ		AO2V3106-2	77272	RETAINER	EA 1
1	60	XDRZZ		AO2V3044-20	77272	HINGE, HALF	EA 1
1	61	XDRZZ		MS2047A3-5	96906	RIVET	EA 3
1	62	XDRZZ		120H124-3	94637	GASKET	EA 1
1	63	XDRZZ		120HA14	94637	VALVE ASSEMBLY	EA 1
1	64	XDRZZ		120HA20	94637	PLATE, INSTRUCTION	EA 1
1	65	PAQZZ	6625-00-999-3693	AO2VS310-2	77272	BAG ASSEMBLY	EA 1
1	66	PAQZZ	6625-00-908-7406	10-359137-1	77820	CABLE ASSEMBLY, ADAPTER	EA 1
1	67	PAQZZ	6625-00-908-7407	10-359138-1	77820	CABLE ASSEMBLY, ADAPTER	EA 1
1	68	PAORH	6625-00-643-2701	CK2354PSMAA	80058	LEAD, BLACK TEST	EA 1
1	69	PAORH	6625-00-643-2702	CK2355PSMAA	80058	LEAD, RED TEST	EA 1
1	70	PAORH	6625-00-649-1985	CK2355PSMAA	80058	LEAD, HIGH VOLTAGE TEST	EA 1



ELOZR002

Figure 2. Red Test Lead CX-23353/PSM-4A.

SECTION II

TM 11-6625-645-24P

63 ILLUSTRATION		64	65	66	67	68	69
63 FIG NO	63 REV NO	64 SMB CODE	65 NATIONAL STOCK NUMBER	66 PART NUMBER	67 QTY	68 DESCRIPTION	69 QTY REQ BY UNIT
GROUP 04, RED TEST TARD CE-2353/704-4A							
2	1	X0002		1-111-799	30703	FRONT HANDLE	EA 3
2	2	X0002		1-111209	30703	FRONT TYP	EA 3
2	3	X0002	6625-645-2702	02989-1	90420	ALUMINUM CLIP	EA 3
2	4	X0002		1-114845	30703	FRONT TYP	EA 1

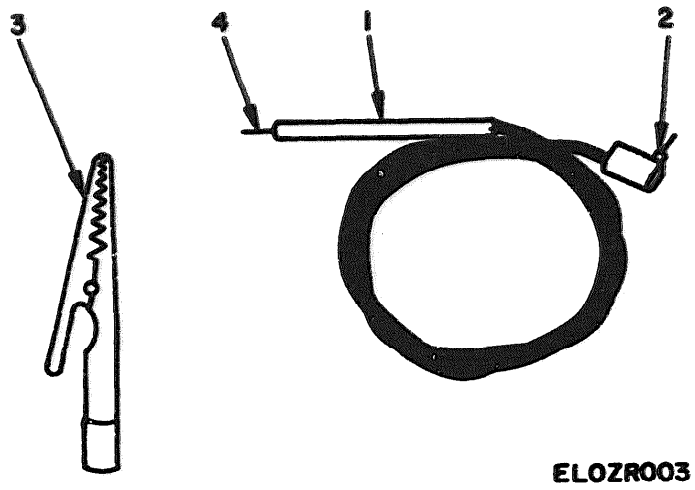
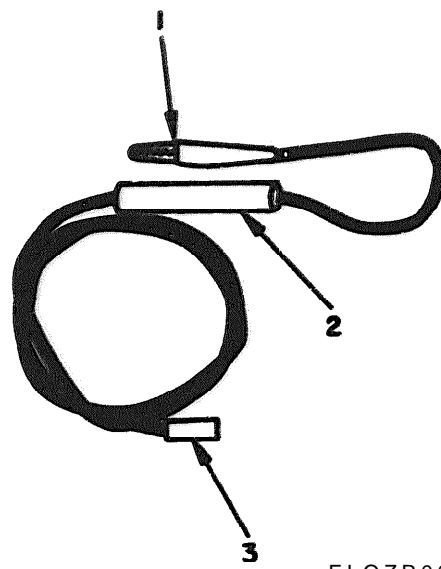


Figure 3. Black Test Lead CX-2354/PSM-4A.

68 ILLUSTRATION		69	70	64	65	67	71	72
68 FIG NO.	68 ITEM NO.	69 BAR CODE	70 NATIONAL STOCK NUMBER	64 PART NUMBER	65 FCOM	67 DESCRIPTION	71 WEARABLE OR CODE	72 QTY INC OR UNIT
						GROUP OF BLACK TEST LEAD CR-2053/FEM-4A		
3	1	XXXX		1-111756	31713	FRONT HANDLE	EA	2
3	2	XXXX		1-111209	31713	FRONT TIP	EA	2
3	3	XXXX	6625-00-643-2701	C2583-2	98820	ALIGNMENT CLIP	EA	2
3	4	XXXX		1-111845	31713	FRONT TIP	EA	2



ELOZR004

Figure 4. High Voltage Test Lead CX-2355/PSM-4A.

SECTION II

TM 11-6625-645-24P

(a) ILLUSTRATION		(b)	(c)	(d)	(e)	(f) DESCRIPTION	(g)	(h)
(1) FIG. NO.	(2) ITEM NO.	(3) SNR CODE	(4) NATIONAL STOCK NUMBER	(5) PART NUMBER	(6) FROM	(7) USABLE ON CODE	(8) QTY	(9) INC. IN LIST
4	1	X82Z	6625-00-649-1985	C2549	91620	GROUP 65 HIGH VELOCITY TEST LEAD CX-235/PM-4A ALLIGATOR CLIP	EA	1
4	2	X82Z		10-590153	31713	CONNECTOR HANDLE AND INSERT ASSEMBLY	EA	1
4	3	X82Z		127165	08101	PIECE TIP	EA	1

SECTION IV.

NATIONAL STOCK TEXT NUMBER AND PART NUMBER INDEX

TM 11-6625-645-24P

NOTE: LATEST NATIONAL STOCK NUMBER ASSIGMENTS ARE INCLUDED AT END OF INDEX

STOCK NUMBER	FIGURE NO.	ITEM NO.	STOCK NUMBER	FIGURE NO.	ITEM NO.
7610-00-145-0179	1	43	6625-00-643-2702	-	--
5310-00167-8812	1	15	6625-00-643-2702	-	--
5936-00-226-0533	1	32	6625-00-649-1985	-	--
5940-250-7751	1	25	6625-00-649-1985	-	--
5940-00-557-1627	1	22	5930-00-663-3950	-	--
5310-00-558-6207	1	24	5930-00-660-3953	-	--
5340-00-565-0004	1	34	5975-00-825-3330	-	--
5935-00-577-2336	1	11	6625-00-900-7403	-	--
5935-00-578-3489	1	12	6625-00-908-7404	-	--
6625-00-589-9795	1	5	6625-00-908-7405	-	--
5210-00-595-6425	1	19	6625-00-908-7406	-	--
5355-00-616-9604	1	4	6625-00-908-7407	-	--
5975-00-642-7261	1	36	6625-00-908-7408	-	--
6625-00-043-2701	1	68	6625-00-999-3693	-	--
6625-00-643-2701	3	3			

PART NUMBER	FSCM	FIG. NO.	ITEM NO.	PART NUMBER	FSCM	FIG. NO.	ITEM NO.
ANV5M48	80058	1	5				
AN34CC8	88044	1	27				
AN500-8-14	88044	1	6				
AN500-8-8	88044	1	17				
AN505C4M6	88044	1	52				
AN507-832R6	88044	1	7				
AN515C4R6	88044	1	55	MILW5086	81349	1	41
AN515C4R8	88044	1	10	MS16108-2A	96906	1	12
AN515C8R6	88044	1	33	MS16108-3A	96906	1	11
AN520C10R12	88044	1	16	MS20253-2-350	96906	1	57
AN565AC4M3	88044	1	3	MS20364-832	96906	1	23
AN960C10L	88044	1	15	MS20365-440	96906	1	20
AN960C4L	88044	1	19	MS203650440	96906	1	21
AN960C8L	88044	1	24	MS203650R32	96906	1	35
A02V5302-10	77272	1	2	MS2047A3-5	96906	1	61
A02V5305-1	77272	1	49	MS219190G10	96906	1	34
A02V5305-2	77272	1	46	MS24524-30	96906	1	30
A02V53074-3	77272	1	32	MS24525-22	96906	1	29
A02V5309-4	77272	1	1	MS35338-80	96906	1	28
A02V5309-5	77272	1	8	MS91528-1P28	96906	1	4
A02V5310-2	77272	1	65				
A02V3030-1	77272	1	14	SSE500-2	77272	1	43
A02V3041-8	77272	1	31	VV13	59730	1	18
A02V3044-10	77272	1	45	1-111-757	31713	2	1
A02V3044-15	77272	1	58	1-111209	31713	2	2
A02V3044-18	77272	1	46	1-111209	31713	3	2
A02V3044-19	77272	1	44	1-111756	31713	3	1
A02V3044-20	77272	1	60	1-111845	31713	3	4
A02V3106-1	77272	1	51	1-114845	31713	2	4
A02V3106-2	77272	1	59	10-359137-1	77820	1	66
A02V3106-3	77272	1	54	10-359138-1	77820	1	67
A02V3106-4	77272	1	56	10-899153	31713	4	2
A02V3106-6	77272	1	53	114E5986-2	77272	1	39
A02V3121-22	77272	1	13	114E5986-4	77272	1	37
A7990-1-121-24A	78553	1	42	114V3008-1	77272	1	9
CX2353PSM4A	80058	1	69	120HA113	94637	1	47
CX2354PSM4A	80058	1	68	120HA113-3	94637	1	50
CX2355PSM4A	80059	1	70	120HA14	94637	1	63
C2549	91820	4	1	120HA20	94637	1	64
C2583-1	91820	2	3	120H124-3	94637	1	62
C2583-2	91820	3	3	120H24SUL8	94637	1	46
				127165	08311	4	3
				142S1ZE3-4	59730	1	36
				1943S1ZE3-4	59730	1	38
				31883	09769	1	26
				31899	09769	1	22
				320570	09769	1	40
				32996	09769	1	25

RECOMMENDED CHANGES TO EQUIPMENT TECHNICAL MANUALS



SOMETHING WRONG WITH THIS MANUAL?

THEN... JOT DOWN THE DOPE ABOUT IT ON THIS FORM. TEAR IT OUT, FOLD IT AND DROP IT IN THE MAIL!

FROM: (YOUR UNIT'S COMPLETE ADDRESS)

Commander
Stateside Army Depot
ATTN: AMSTA-US
Stateside, N.J. 07703

DATE 10 July 1975

PUBLIC. TION NUMBER

TM 11-5840-340-12

DATE

23 Jan 74

TITLE

Radar Set AN/SPG-76

BE EXACT... PIN-POINT WHERE IT IS

PAGE NO.	PARA-GRAPH	FIGURE NO.	TABLE NO.
2-25	2-28		
3-10	3-3		3-1
5-6	5-8		

IN THIS SPACE TELL WHAT IS WRONG AND WHAT SHOULD BE DONE ABOUT IT:

Recommend that the installation antenna alignment procedure be changed throughout to specify a 2° IFF antenna lag rather than 1°.

REASON: Experience has shown that with only a 1° lag, the antenna servo system is too sensitive to wind gusting in excess of 20 knots, and has a tendency to rapidly accelerate and decelerate as it hunts, causing strain to the drive train. Hunting is minimized by adjusting the lag to 2° without degradation of operation.

Item 5, Function column. Change "2 db" to "3db."

REASON: The adjustment procedure for the TRANS POWER FAULT indicator calls for a 3 db (500 watts) adjustment to light the TRANS POWER FAULT indicator.

Add step f.1 to read, "Replace cover plate removed in step e.1, above."

REASON: To replace the cover plate.

F03

Zone C 3. On J1-2, change "+24 VDC to "+5 VDC."

REASON: This is the output line of the 5 VDC power supply. + 24 VDC is the input voltage.

TYPED NAME, GRADE OR TITLE, AND TELEPHONE NUMBER

SSG I. M. DeSpirito 999-1776

SIGN HERE:

SSG I. M. DeSpirito

DA FORM 2028-2 (TEST)

P.S.--IF YOUR OUTFIT WANTS TO KNOW ABOUT YOUR MANUAL "FIND" MAKE A CARBON COPY OF THIS AND GIVE IT TO YOUR HEADQUARTERS.

HISA 1686-75

FILL IN YOUR
UNIT'S ADDRESS

FOLD BACK

DEPARTMENT OF THE ARMY

OFFICIAL BUSINESS
PENALTY FOR PRIVATE USE, \$300

POSTAGE AND FEES PAID
DEPARTMENT OF THE ARMY
GDE-314



Commander
US Army Electronics Command
ATTN: DRSEL-MA-Q
Fort Monmouth, New Jersey 07703

TEAR ALONG DOTTED LINE

FOLD BACK

REVERSE OF DA FORM 2025-2 (TEST)

RECOMMENDED CHANGES TO EQUIPMENT TECHNICAL MANUALS



SOMETHING WRONG WITH THIS MANUAL?

THEN... JOT DOWN THE DOPE ABOUT IT ON THIS FORM, TEAR IT OUT, FOLD IT AND DROP IT IN THE MAIL!

FROM: (YOUR UNIT'S COMPLETE ADDRESS)

DATE

PUBLICATION NUMBER

DATE

TITLE

BE EXACT... PIN-POINT WHERE IT IS

IN THIS SPACE TELL WHAT IS WRONG AND WHAT SHOULD BE DONE ABOUT IT:

PAGE NO.

PARA-GRAPH

FIGURE NO.

TABLE NO.

TEAR ALONG DOTTED LINE

TYPED NAME, GRADE OR TITLE, AND TELEPHONE NUMBER

SIGN HERE:

DA FORM 2028-2 (TEST)
1 AUG 74

P.S.--IF YOUR OUTFIT WANTS TO KNOW ABOUT YOUR MANUAL "FIND," MAKE A CARBON COPY OF THIS AND GIVE IT TO YOUR HEADQUARTERS.

FILL IN YOUR
UNIT'S ADDRESS

FOLD BACK

DEPARTMENT OF THE ARMY

OFFICIAL BUSINESS
PENALTY FOR PRIVATE USE, \$300

POSTAGE AND FEES PAID
DEPARTMENT OF THE ARMY
GDS-314



Commander
US Army Electronics Command
ATTN: DRSEL-MA-Q
Fort Monmouth, New Jersey 07703

TEAR ALONG DOTTED LINE

FOLD BACK

REVERSE OF DA FORM 2828-2 (TEST)

RECOMMENDED CHANGES TO EQUIPMENT TECHNICAL MANUALS



SOMETHING WRONG WITH THIS MANUAL?

THEN... JOT DOWN THE DOPE ABOUT IT ON THIS FORM, TEAR IT OUT, FOLD IT AND DROP IT IN THE MAIL!

FROM: (YOUR UNIT'S COMPLETE ADDRESS)

DATE

PUBLICATION NUMBER

DATE

TITLE

BE EXACT... PIN-POINT WHERE IT IS

IN THIS SPACE TELL WHAT IS WRONG AND WHAT SHOULD BE DONE ABOUT IT:

PAGE NO.	PARA-GRAPH	FIGURE NO.	TABLE NO.
----------	------------	------------	-----------

TEAR ALONG DOTTED LINE

TYPED NAME, GRADE OR TITLE, AND TELEPHONE NUMBER

SIGN HERE:

DA FORM 2028-2 (TEST)
1 AUG 74

P.S.--IF YOUR OUTFIT WANTS TO KNOW ABOUT YOUR MANUAL "FIND," MAKE A CARBON COPY OF THIS AND GIVE IT TO YOUR HEADQUARTERS.

FILL IN YOUR
UNIT'S ADDRESS

FOLD BACK

DEPARTMENT OF THE ARMY

OFFICIAL BUSINESS

PENALTY FOR PRIVATE USE, \$300

POSTAGE AND FEES PAID
DEPARTMENT OF THE ARMY
DDO-314



Commander
US Army Electronics Command
ATTN: DRSEL-MA-Q
Fort Monmouth, New Jersey 07703

TEAR ALONG DOTTED LINE

FOLD BACK

REVERSE OF DA FORM 2026-2 (TEST)

By order of the Secretary of the Army:

Official

PAUL T. SMITH
Major General, United States Army
The Adjutant General

BERNARD W. ROGERS
General, United States Army
Chief of Staff

DISTRIBUTION:

To be distributed in accordance with DA Form 12-31, Organizational Maintenance Requirements for CH-47 A, B and C Aircrafts.

DEPARTMENT OF THE ARMY
US ARMY AG PUBLICATIONS CENTER
1433 WOODSON ROAD
ST. LOUIS, MISSOURI 63114
OFFICIAL BUSINESS
PENALTY FOR PRIVATE USE \$300

POSTAGE AND FEES PAID
DEPARTMENT OF THE ARMY
GDD 314



END

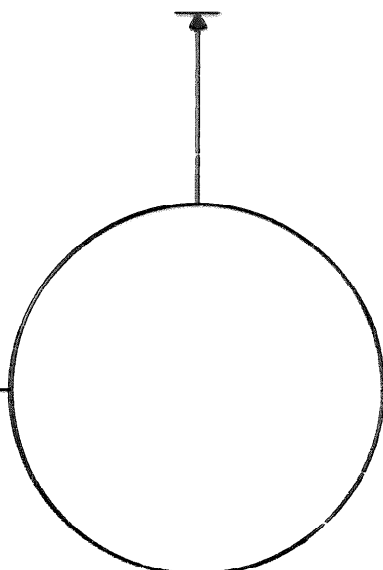
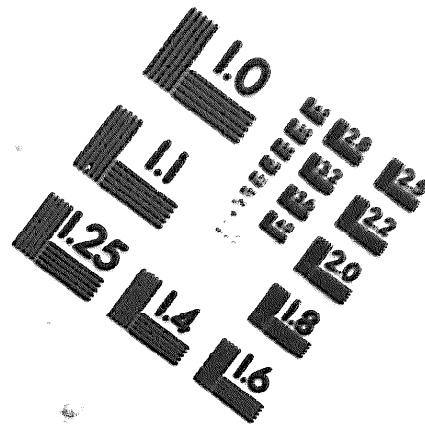
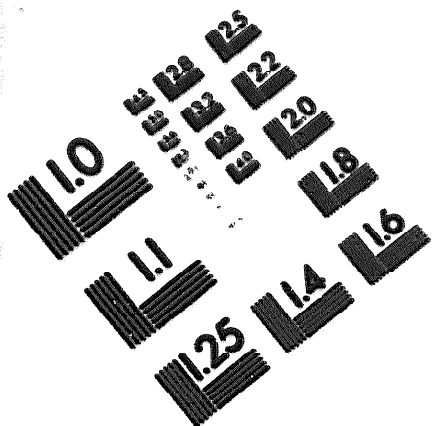
8-1-83

DATE





DEPARTMENT OF THE ARMY
MICROFORM
TEST TARGET



1.0 mm (e= .81 mm)

ABC DEFGHIJKLMNOPQRSTUVWXYZ 1234567890
abcdefghijklmnopqrstuvwxyz \$%&' /%# 1/2 3/4 —→ + x & @ *

1.5 mm (e= 1.09 mm)

ABC DEFGHIJKLMNOPQRSTUVWXYZ 1234567890
abcdefghijklmnopqrstuvwxyz \$%&' /%# 1/2 3/4 —→ + x & @ *

2.0 mm (e= 1.37 mm)

ABC DEFGHIJKLMNOPQRSTUVWXYZ
abcdefghijklmnopqrstuvwxyz
1234567890 \$%&' /%# 1/2 3/4 —→ + x & @ *

2.5 mm (e= 1.77 mm)

ABC DEFGHIJKLMNOPQRSTUVWXYZ
abcdefghijklmnopqrstuvwxyz
1234567890 \$%&' /%# 1/2 3/4 —→ + x & @ *

1.0 mm (e= .81 mm)

ABC DEFGHIJKLMNOPQRSTUVWXYZ 1234567890
abcdefghijklmnopqrstuvwxyz \$%&' /%# 1/2 3/4 —→ + x & @ *

1.5 mm (e= 1.09 mm)

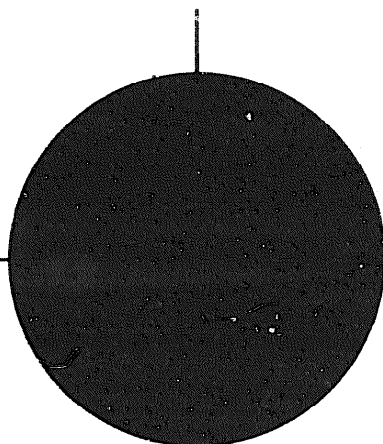
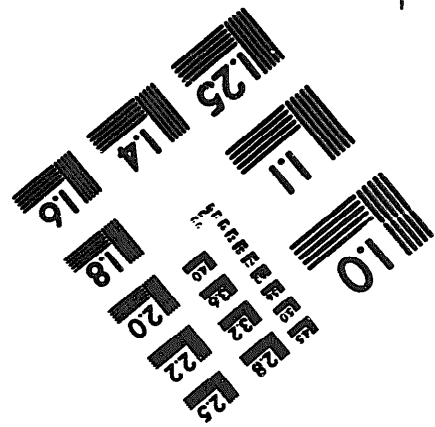
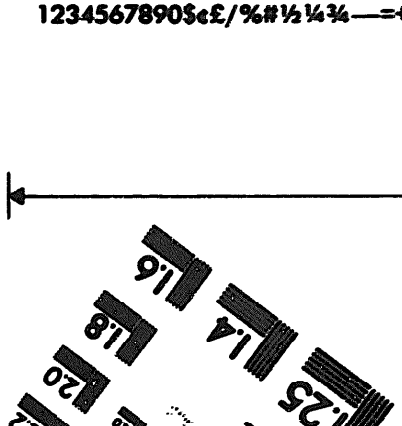
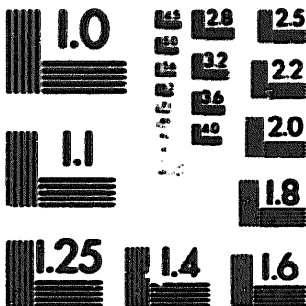
ABC DEFGHIJKLMNOPQRSTUVWXYZ 1234567890
abcdefghijklmnopqrstuvwxyz \$%&' /%# 1/2 3/4 —→ + x & @ *

2.0 mm (e= 1.37 mm)

ABC DEFGHIJKLMNOPQRSTUVWXYZ
abcdefghijklmnopqrstuvwxyz
1234567890 \$%&' /%# 1/2 3/4 —→ + x & @ *

2.5 mm (e= 1.77 mm)

ABC DEFGHIJKLMNOPQRSTUVWXYZ
abcdefghijklmnopqrstuvwxyz
1234567890 \$%&' /%# 1/2 3/4 —→ + x & @ *



250 MM